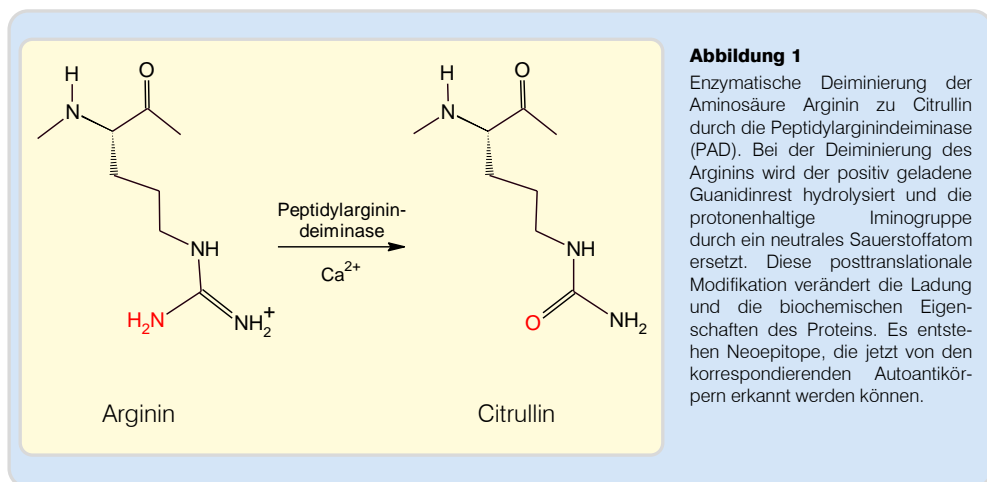




CEP-1-Autoantikörper

- Akronym** CEP-1: citrullinierte α -Enolase, Peptid 1
- Indikationen** ▶ Rheumatoide Arthritis
- Siehe auch** ▶ [Autoantikörper bei rheumatoider Arthritis](#)
▶ [Cyclische Citrullin-Peptid-Autoantikörper](#)

Antigen Citrulliniertes Peptid 1 (KIHAcitEIFDScitGNPTVE) der α -Enolase (Gen: *ENO1*; Chromosom 1p36.2; 47,47 kDa; P06733), das durch die Deiminierung von den N-terminalen Argininen an den Positionen 9 und 15 zu Citrullin entsteht.



Vorkommen

Krankheitsbilder	Häufigkeiten [%]	Autoren
Rheumatoide Arthritis	63,9	Fisher et al. 2014
	44, 2	Umeda et al. 2013
	24,0 - 27,0	Fisher et al. 2011
	26,8	Montes et al. 2011
	43,0 - 63,0	Mahdi et al. 2009
Parodontitis	12,0	de Pablo et al. 2013

Literatur

Fisher BA, Bang SY, Chowdhury M, Lee HS, Kim JH, Charles P, Venables P, Bae SC: Smoking, the HLA-DRB1 shared epitope and ACPA fine-specificity in Koreans with rheumatoid arthritis: evidence for more than one pathogenic pathway linking smoking to disease. *Ann Rheum Dis* (2014); 73(4): 741 - 747 (PMID: [23505239](#)).

Fisher BA, Plant D, Brode M, van Vollenhoven RF, Mathsson L, Symmons D, Lundberg K, Rönnelid J, Venables PJ: Antibodies to citrullinated α -enolase peptide 1 and clinical and radiological outcomes in rheumatoid arthritis. *Ann Rheum Dis* (2011); 70(6): 1.095 - 1.098 (PMID: [21367760](#)).

Kastbom A, Forslind K, Ernestam S, Geborek P, Karlsson JA, Petersson IF, Saevarsdottir S, Klareskog L, van Vollenhoven RF, Lundberg K: Changes in the anticitrullinated peptide anti-



CEP-1-Autoantikörper

body response in relation to therapeutic outcome in early rheumatoid arthritis: results from the SWEFOT trial. *Ann Rheum Dis* (2014); pii: annrheumdis-2014-205698 (PMID: [25550338](#)).

Kinloch AJ, Alzabin S, Brintnell W, Wilson E, Barra L, Wegner N, Bell DA, Cairns E, Venables PJ. Immunization with *Porphyromonas gingivalis* enolase induces autoimmunity to mammalian α -enolase and arthritis in DR4-IE-transgenic mice. *Arthritis Rheum* (2011); 63(12): 3.818 - 3.823 (PMID: [21953289](#)).

Mahdi H, Fisher BA, Källberg H, Plant D, Malmström V, Rönnelid J, Charles P, Ding B, Alfredsson L, Padyukov L, Symmons DP, Venables PJ, Klareskog L, Lundberg K: Specific interaction between genotype, smoking and autoimmunity to citrullinated alpha-enolase in the etiology of rheumatoid arthritis. *Nat Genet* (2009); 41(12): 1.319 - 1.324 (PMID: [19898480](#)).

Montes A, Dieguez-Gonzalez R, Perez-Pampin E, Calaza M, Mera-Varela A, Gomez-Reino JJ, Gonzalez A: Particular association of clinical and genetic features with autoimmunity to citrullinated α -enolase in rheumatoid arthritis. *Arthritis Rheum* (2011); 63(3): 654 - 661 (PMID: [21360494](#)).

Montes A, Perez-Pampin E, Calaza M, Gomez-Reino JJ, Gonzalez A: Association of anti-citrullinated vimentin and anti-citrullinated α -enolase antibodies with subsets of rheumatoid arthritis. *Arthritis Rheum* (2012); 64(10): 3.102 - 3.110 (PMID: [22674012](#)).

de Pablo P, Dietrich T, Chapple IL, Milward M, Chowdhury M, Charles PJ, Buckley CD, Venables PJ: The autoantibody repertoire in periodontitis: a role in the induction of autoimmunity to citrullinated proteins in rheumatoid arthritis? *Ann Rheum Dis* (2014); 73(3): 580 - 586 (PMID: [23434568](#)).

Umeda N, Matsumoto I, Ito I, Kawasaki A, Tanaka Y, Inoue A, Tsuboi H, Suzuki T, Hayashi T, Ito S, Tsuchiya N, Sumida T: Anti-citrullinated glucose-6-phosphate isomerase peptide antibodies in patients with rheumatoid arthritis are associated with HLA-DRB1 shared epitope alleles and disease activity. *Clin Exp Immunol* (2013); 172(1): 44 - 53 (PMID: [23480184](#)).

Wegner N, Lundberg K, Kinloch A, Fisher B, Malmström V, Feldmann M, Venables PJ: Autoimmunity to specific citrullinated proteins gives the first clues to the etiology of rheumatoid arthritis. *Immunol Rev* (2010); 233(1): 34 - 54 (PMID: [20192991](#)).